

Trails of Upper Bidwell Park

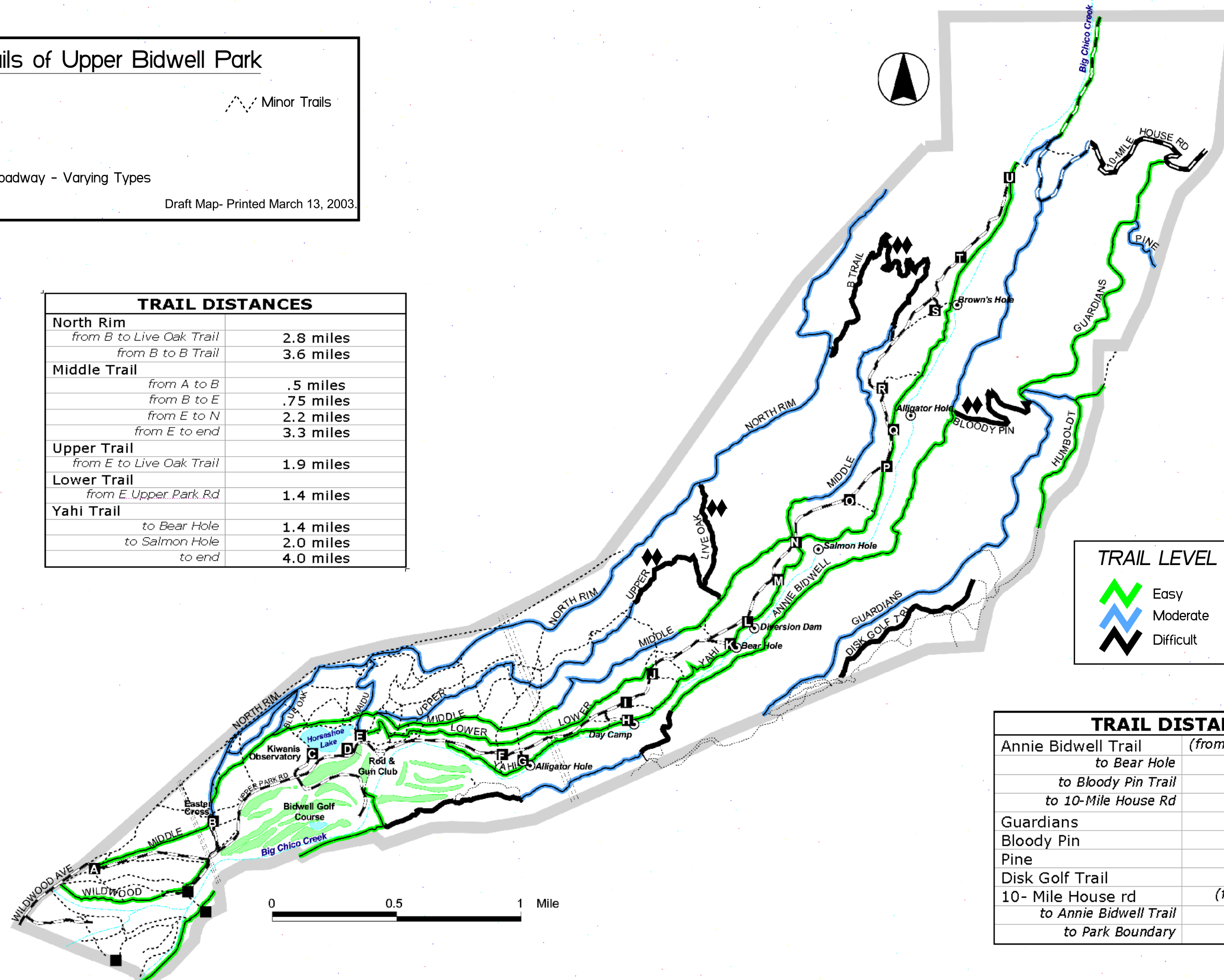
- Parking
- ⚡ Powerlines
- ⊙ Swimming
- ⚡ Improved Roadway - Varying Types
- ⚡ Minor Trails

Draft Map- Printed March 13, 2003.

TRAIL DISTANCES	
North Rim	
from B to Live Oak Trail	2.8 miles
from B to B Trail	3.6 miles
Middle Trail	
from A to B	.5 miles
from B to E	.75 miles
from E to N	2.2 miles
from E to end	3.3 miles
Upper Trail	
from E to Live Oak Trail	1.9 miles
Lower Trail	
from E Upper Park Rd	1.4 miles
Yahi Trail	
to Bear Hole	1.4 miles
to Salmon Hole	2.0 miles
to end	4.0 miles

TRAIL LEVEL OF DIFFICULTY

- ⚡ Easy
- ⚡ Moderate
- ⚡ Difficult
- ⚡ Most Difficult



TRAIL DISTANCES	
Annie Bidwell Trail	(from old pistol range)
to Bear Hole	2.2 miles
to Bloody Pin Trail	3.7 miles
to 10-Mile House Rd	4.7 miles
Guardians	3.4 miles
Bloody Pin	0.9 miles
Pine	0.3 miles
Disk Golf Trail	0.8 miles
10- Mile House rd	(from Highway 32)
to Annie Bidwell Trail	1.2 miles
to Park Boundary	2.0 miles