

Copies of this Agenda
Available from:
Telephone:

General Services Department-Park Division
965 Fir Street
(530) 896-7800

Agenda Prepared: 2/11/10
Agenda Posted: 2/11/10
Prior to: 5:00 p.m.

**BIDWELL PARK AND PLAYGROUND COMMISSION
POLICY ADVISORY COMMITTEE MEETING
February 18, 2010
Conference Room 1, 421 Main Street, Chico
6:00 p.m.**

(Commissioners Brentwood, Turney, and Ober, Chair)

NOTE: Items Not Appearing on Posted Agenda - This agenda was posted on the Council Chamber bulletin board at least 72 hours in advance of this meeting. For each item not appearing on the posted agenda, upon which the Committee wishes to take action, it must make one of the following determinations:

1. Determine by a two-thirds vote, or by a unanimous vote if less than two-thirds of the Committee is present that the need to take action arose subsequent to the agenda being posted; or,
2. Determine that the item appears on a posted agenda for a meeting occurring not more than five calendar days prior to this meeting and the item was continued to this meeting.

Items may be added to the agenda for the Committee to acknowledge receipt of correspondence or other information, or for discussion only, of items brought up by a member of the general public that are within the subject matter jurisdiction of the Committee.

AMERICAN DISABILITIES ACT:

Please contact the General Services Department at 896-7800 should you require an agenda in an alternative format or if you need to request a disability-related modification or accommodation in order to participate in a meeting. This request should be received at least three working days prior to the meeting in order to accommodate your request. Anyone who has difficulty hearing the proceedings of a meeting may be provided with a portable listening device by requesting one from the General Services Department.

AGENDA MATERIALS:

Materials related to an item on this Agenda submitted to the Commission after distribution of the agenda packet are available for public inspection in the General Services Department Office at 965 Fir Street, Chico during normal business hours. Such materials are also available on the City of Chico's website at www.ci.chico.ca.us subject to staff's ability to post the materials before the meeting.

1. CALL TO ORDER

- 2. REGULAR AGENDA** - All items listed under the Regular Agenda are in the order which is believed are of interest to the public or which require Committee action at this meeting. The items will be considered in the order listed unless the Committee members request a change. Any person may speak on items on the Regular Agenda.

2.1. REVIEW AND CONSIDERATION OF OPERATING AGREEMENT BETWEEN THE CITY OF CHICO PARK DIVISION WITH THE OUTSIDE RECREATION ADVOCACY, INC. FOR THE CONSTRUCTION AND MANAGEMENT OF THE HWY 32 DISC GOLF COURSES.

This fifth meeting is a continuation from the Committee's 1/11/10 meeting and the group will review and consider the proposed Operating Agreement. The proposal has been revised to reflect previous discussions. *The General Services Director recommends approval as presented or modified.*

3. BUSINESS FROM THE FLOOR

4. ADJOURN

cc: BPPC Distribution List
ORAI
Friends of Bidwell Park



BPPC Policy Advisory Committee Report

Meeting Date: 2/18/10

DATE: February 4, 2010

TO: POLICY ADVISORY COMMITTEE (Commissioners Brentwood, Turney and Ober, Chair)

FROM: RUBEN MARTINEZ, GENERAL SERVICES DIRECTOR, 894-4201

RE: REVIEW AND CONSIDERATION OF OPERATING AGREEMENT BETWEEN THE CITY OF CHICO PARK DIVISION WITH THE OUTSIDE RECREATION ADVOCACY, INC. FOR THE CONSTRUCTION AND MANAGEMENT OF THE HWY. 32 DISC GOLF COURSE.

RECOMMENDATION:

The General Services Director recommends that the Committee continue its review and discussion of recent modifications to the proposed Operating Agreement with the Outside Recreation Advocacy, Inc. (ORAI) for the development and management of the Hwy. 32 Disc Golf courses. After the Committee has reviewed and approved, as presented or revised, it will be submitted to the Bidwell Park and Playground Commission (BPPC) for review and approval.

BACKGROUND:

At its 5/19/09 meeting, the City Council directed, among other items, that an agreement be developed with a nonprofit organization to develop and operate a 12-hole disc golf short course and an 18-hole course in Bidwell Park at a site located off of Hwy. 32. An excerpt from the 5/19/09 City Council meeting is attached as Attachment A..

A draft "Operating Agreement for Recreational Services in Bidwell Park" (Exhibit B) for construction and management of the disc golf courses with the nonprofit corporation ORAI has been prepared for Committee review and discussion. To date, the Policy Advisory Committee has held three meetings (11/19/09, 12/3/09 and 12/14/09) to discuss the proposed Operating Agreement. The Committee continued the discussion to its 1/11/10 meeting.

Based on a proposal from ORAI provided to the Committee at the 12/14/09 meeting, the Committee discussed several issues and changes to the proposed draft Operating Agreement, which are reflected in the attached new draft Operating Agreement. The following issues were proposed by the ORAI for consideration:

- a. Allocating Proposition 40 Funds (\$52,000) for building the Disc Golf Long Course at Hwy 32 and placement of 18 disc golf targets/baskets in locations at existing parks or facilities outside of Bidwell Park.
- b. Initiate a discussion of possible locations and alternatives to the Hwy. 32 disc golf short course. ORAI has offered to temporarily remove the existing tone poles on the Hwy. 32 short course for up to two years while the search for an alternative location(s) takes place.

The Policy Advisory Committee requested that ORAI's proposed items be submitted to the Bidwell Park and Playground Commission. At its meeting on 1/25/10, the BPPC reviewed the items proposed and voted (4-1-2) that the City Council approve the items proposed by ORAI with the addition that the Proposition 40 funds also be used to implement all associated mitigation measures called for by the Bidwell Park Master Management Plan Environmental Impact Report.

DISCUSSION:

At its 1/19/10 meeting, the Council voted unanimously (7-0) to authorize the allocation of Proposition 40 grant funds for an amount not to exceed \$52,000 for reimbursement of the construction of the 18-hole long disc course and for placement of eighteen (18) disc golf targets in locations outside of Bidwell Park. A minimum of \$7,200 of the grant funds must be used to install the 18 disc golf targets. The Council also directed that ORAI be responsible for providing up to \$52,000 in matching funds, either as money or as an equivalent value of supplies, materials, services and volunteer time (i.e. in-kind).

The ORAI will also be responsible for removing the short course's tone poles/targets and other disc golf short course amenities within 60 days of the completion of the 18-hole long disc golf course and the placement of the 18 targets in alternative locations outside Bidwell Park.

The Policy Advisory Committee is requested to continue its discussion and review the revised Operating Agreement. The Committee's recommendations regarding the Operating Agreement will be forwarded to the Commission for review and comment prior to City Council consideration and final approval.

ATTACHMENTS:

Revised Operating Agreement for Recreational Services in Bidwell Park (City of Chico/Outside Recreation Advocacy, Inc.)

Attachment A: BPMMP Conceptual Layout for Disc Golf Course Layout

Attachment B: Master Mitigation Monitoring Program, BPMMP EIR

Attachment C: Four-Year Implementation Plan

Attachment D: Annual Calendar of Implementation and Check-list

DISTRIBUTION:

ORAI
Friends of Bidwell Park

OPERATING AGREEMENT
FOR RECREATIONAL SERVICES IN BIDWELL PARK
(CITY OF CHICO/OUTSIDE RECREATION ADVOCACY, INC.)

THIS OPERATING AGREEMENT (Agreement) entered on _____, 2010, between the City of Chico, a municipal corporation of the State of California (City), and Outside Recreation Advocacy, Inc., a non-profit corporation (Operator).

RECITALS

WHEREAS, City desires to maintain public use of disc golf activities at the premises in Bidwell Park off Highway 32, more particularly described below;

WHEREAS, Operator desires to construct and maintain the disc golf course in compliance with the Bidwell Park Master Management Plan (MMP), and to provide disc golf activities for members and the public;

THEREFORE, IT IS AGREED by both City and Operator as follows:

1. DESCRIPTION OF PREMISES

City hereby grants to Operator permission to enter upon, occupy, and use the premises located at in Bidwell Park described in Exhibit A attached hereto and by this reference incorporated herein, for the purpose of a disc golf facility and subject to the terms and conditions set forth herein. Facilities on the premises will include, but are not limited to, improvements and equipment in areas specific to disc golf. (Collectively “Disc Golf Facility”)

2. SCOPE OF USE

The premises, as depicted in Exhibit A, may be occupied and used by Operator solely to conduct the following Recreational Services in Bidwell Park limited to:

- a. 18-hole disc golf long course consistent with City Council approval on May 19, 2009, the Bidwell Park Master Management Plan (BPMMP), Environmental Impact Report (EIR), and Master Mitigation and Monitoring Program (MMMP);
- b. 12-hole disc golf short course consistent with City Council approval on May 19, 2009, the BPMMP, EIR, and MMMP. Operator understands that City Council approved the 12-hole disc golf short course for a period of up to five-years from the date of City Council approval during which time a search for a replacement short course will be conducted;
- c. All Recreational Activities and availability of the premises shall be subject to weather conditions based on the City of Chico Bidwell Park Wet Weather Policy; and

- d. Operator may sell non-food items including, but not limited to, hats, T-shirts, and discs, for the benefit of Operator's non-profit organization.

3. TERM

The initial term of this Agreement shall be for the five-year period commencing on _____, 2010, and terminating on _____, 2015. Thereafter, the term of this Agreement shall be automatically extended for two successive five-year periods.

At the end of the fourth year of this Agreement, City will conduct a review of the Agreement to determine whether City will agree to extend the Agreement for a second five-year term. If the Agreement is so extended, City shall conduct another review at the end of the ninth year in order to determine whether City will agree to extend the Agreement for a third five-year term.

4. PERMISSION NOT EXCLUSIVE

The permission given is not exclusive to Operator, and City reserves the right at any time to permit other persons to conduct these above-mentioned Recreational Services in Bidwell Park.

Notwithstanding the above, Operator shall have exclusive use of each course for up to ten (10) days per year. Operator will:

- a. Limit the number of players to 90 during tournaments;
- b. End tournaments by 5:00 p.m.;
- c. Not hold tournaments during national holidays; and
- d. Have the ability to reschedule tournaments that are cancelled due to weather or other conditions beyond Operator's control (i.e. air quality and wildfires) within sixty (60) days of the tournament date.

Operator shall submit a list of the exclusive use dates to City on an annual basis on or before February 1 of each year.

Tournament fees and entry charges will be determined by Operator for the exclusive use days.

The parking area and non-disc golf related facilities including, but not limited to, restrooms and picnic tables shall remain open to the public during exclusive use days unless Operator obtain park permits and reservations pursuant to CMC 12R.08 and 12R.10.

Operator will be allowed to hold a game one Saturday per month. The Disc Golf Facility will be open to the public during such games and will be considered non-exclusive use days.

5. CONSIDERATION

Consideration, in lieu of payment of any operation fees, shall be set forth as follows:

- a. The principal consideration to be given by Operator to City for its use of the premises is the agreement by Operator to implement the MMMP in accordance with this Agreement, construct both courses, and use such premises for the purpose of operating the Recreational Services, described in Section 2, above, for Operator's members as well as members of the general public;
- b. As additional consideration, Operator shall provide an annual report (i.e. events, usage, status of mitigation and monitoring program) to the Bidwell Park and Playground Commission; and
- c. As additional consideration, Operator shall regularly publicize the availability, including, but not limited to, hours of operation and special events.

6. GENERAL PUBLIC AVAILABILITY REQUIREMENTS

The premises and associated Recreational Activities will be available to the general public at all times except those days of Operator's exclusive use as defined above. All Recreational Activities and availability of the premises shall be subject to weather conditions.

7. COMPLIANCE WITH LAWS

In exercising the permission given, Operator shall comply with all federal, state, and City statutes, ordinances, and regulations, including, but not limited to, any standards for conducting Recreational Services in Bidwell Park, now or hereafter adopted.

8. WASTE AND NUISANCE

During the term of this Agreement, Operator shall not commit nor allow to be committed any waste on the premises nor maintain or allow to be maintained any nuisance thereon.

9. NONDISCRIMINATION

In exercising the permission given, Operator shall not discriminate against any person on the basis of race, sex, age, national origin, or religious preference.

10. CONDITION OF PREMISES

At the commencement of this Agreement, Operator shall accept the premises and all improvements thereon and all facilities appurtenant thereto in their present condition and “as is”. No representation, statement or warranty, express or implied, has been made by or on behalf of City as to the condition of the premises or as to the use that may be made of such premises. In no event shall City be liable for any defect in the premises or for any limitation on its use.

11. MITIGATION AND MONITORING REQUIREMENTS

In compliance with the BPMMP, Operator agrees to construct the 18-hole long and 12-hole short disc golf courses and conduct all Recreational Activities on premises in accordance with Resolution No. 93-08, entitled, “Resolution of the City of Chico Council of the City of Chico Adopting Findings Regarding Environmental Effects and Adopting a Master Mitigation Monitoring Program for the Bidwell Park Master Management Plan Update (State Clearinghouse Number 2004102045).” A copy of the MMMP with all requirements is attached as Exhibit B.

Prior to construction and annually thereafter, City agrees to collect data pursuant to Mitigation Measure BIO-1B-F, Mitigation Measure BIO-1D-E, and Mitigation Measures BIO-3C-F and -K, required by and in accordance with the MMMP. However, Operator agrees to reimburse City for costs associated with such data collection in an amount not to exceed five thousand dollars (\$5,000.00). During the initial or any extended term of this Agreement, this “not to exceed amount” shall be increased annually by three percent (3%). City is not required to expend any more than is reimbursable by Operator under this Agreement.

12. IMPLEMENTATION PLAN AND CONSTRUCTION

a. 18-Hole Disc Golf Course and 18 Disc Golf Targets

Within sixty (60) days of executing this Agreement, Operator agrees to provide an implementation plan to the City for the construction of the 18-hole long disc golf course and the placement of 18 disc golf targets at alternative locations outside of Bidwell Park consistent with the phases and time frames in Exhibit C. The construction of the 18-hole disc golf course shall be consistent with the BPMMP Alternative B and MMMP. Operator may prepare the implementation plan in phases. The implementation plan, or any phased portions of the plan, shall be approved by the City prior to construction. The implementation plan shall be enforceable under this Agreement. Operator will provide a draft budget which includes Operator’s best estimate of the costs, time and materials that will be needed to accomplish the specific time frames and milestones set forth in the implementation plan

In accordance with specific time frames and milestones set forth in the

implementation plan, Operator agrees to complete construction of the 18-hole long disc golf course and the placement of the 18 disc golf targets within eighteen (18) months of City's authorization to proceed. Completion schedule may be modified with City approval if weather or other conditions beyond Operator's control delay construction.

City's authorization will include approval of City's Proposition 40 grant funds for an amount not to exceed \$52,000.00 for reimbursement for construction of the 18-hole long disc course and placement of eighteen (18) disc golf targets at alternative locations outside of Bidwell Park. A minimum of \$7,200.00 of City's Proposition 40 grant funds will be used to install 18 disc golf targets at alternative locations outside of Bidwell Park.

Operator will provide up to \$52,000.00 of matching funds, in money or equivalent value of supplies, materials, services and volunteer time. Volunteer time shall be valued at a per hour rate based on the current or revised rate for California set forth at www.independentsector.org/programs/research/volunteer_time.html. Operator will provide documentation of volunteer hours with each reimbursement request or quarterly, whichever is more frequent.

Operator and City will coordinate expenditure of grant funds in accordance with the terms and conditions of the granting agency and the reimbursement requirements set forth in section 13, below.

b. 12-Hole Disc Golf Course

On or before January 15, 2013, Operator agrees to provide an implementation plan to the City which is consistent with the BPMMP Alternative B and the MMMP, for the construction of the 12-hole short disc golf course consistent with the phases and time frames in Exhibit D. Operator may prepare the implementation plan in phases. The implementation plan, or any phased portions of the plan, shall be approved by the City prior to construction. The implementation plan shall be enforceable under this Agreement.

Within sixty (60) days of completion and city approval of the newly constructed 18-hole long disc golf course, and placement of eighteen (18) targets in alternative locations outside of Bidwell Park, Operator shall remove all tone poles/targets and other disc golf course improvements related to the 12-hole short disc golf course at the Disc Golf Facility. If a new site for the 12-hole short disc golf course is not identified and approved by the City on or before December 1, 2012, Operator may install, operate and maintain a new 12-hole short disc golf course consistent with the BPMMP Alternative B and the MMMP.

13. REIMBURSEMENT

a. Costs and Reimbursement

In accordance with the implementation plan required pursuant to section 12.a, above, qualified, actual costs will be reimbursed to Operator as provided for in this section 13. The maximum amount to be reimbursed to Operator pursuant to this Agreement shall not exceed \$52,000.00. All funds to be paid and remitted by City to Operator pursuant to this Agreement shall include the documentation of the actual costs to be paid or reimbursed, including but not limited to invoices. Within 15 business days (i.e., other than Saturday, Sunday, or legal holidays recognized by City) of its receipt of the monthly reimbursement submittal, City will confirm its review and approval to Operator. In the event that City notifies Operator of any deficiency in a monthly reimbursement submittal, City and Operator will cooperate in good faith to resolve any deficiency promptly.

b. Completion, Inspection, and Acceptance of Improvements

Operator shall install and construct the 18-hole long disc golf course and the 18 disc golf targets in alternative locations outside Bidwell Park in compliance with City approved plans and specifications. The 18-hole long disc golf course and the 18 disc golf targets in alternative locations outside Bidwell Park shall not be accepted unless completed in a manner consistent with the design plans and specifications, and constructed in accordance with applicable City standards relating to the installation and construction of the 18-hole long disc golf course and the 18 disc golf targets in alternative locations outside Bidwell Park . Prior to City's acceptance of the 18-hole long disc golf course and the 18 disc golf targets in alternative locations outside Bidwell Park , such improvements shall be subject to inspection by City. Operator shall provide City with:

1. As-built drawings or similar design plans and specifications in a form complying with applicable City requirements; and
2. Evidence satisfactory to City that all costs of installing and constructing the 18-hole long disc golf course and the 18 disc golf targets in alternative locations outside Bidwell Park have been fully paid by Operator.

14. MAINTENANCE AND REPAIR

Operator shall, at its sole cost and expense, maintain the premises and all disc golf improvements thereon and appurtenances thereto in good repair and in at least as good condition as that in which they were delivered, ordinary wear and tear excepted.

15. UTILITIES AND SERVICES

During the term of this Agreement, Operator shall be responsible for providing and paying for any electricity or other utilities required on the premises and City shall have no responsibility of any kind for any such utilities.

16. RIGHT OF ENTRY

Operator shall permit City and any agent or employee of City to enter in and upon the

premises at all reasonable times for the purpose of inspecting same, or for the purpose of posting notices of nonresponsibility for alteration, additions, or repairs, without any liability to Operator for any loss of occupation or quiet enjoyment of the premises thereby occasioned.

17. ALTERATIONS OR ADDITIONS TO IMPROVEMENTS ON PREMISES

All improvements to the premises made by Operator will be done in accordance with City approved plans. Operator shall not make any alteration or addition to the improvements on the premises without the prior approval of City.

Upon termination of this Agreement, any alterations or additions to the improvements on the premises made by Operator shall become the property of City without the payment of any compensation therefor; provided, however, that upon termination of this Agreement, City shall have the right to require Operator to remove any additions to the improvements on the premises and/or restore any altered improvement to its original condition, all at Operator's sole cost and expense.

18. INDEMNIFICATION

Operator shall exercise the permission granted herewith at Operator's own risk and Operator shall indemnify City, its boards, commissions, and members thereof, its officers, agents, and employees, against all liability or damages, costs, losses, and expenses, including, but not limited to, attorneys' fees, arising out of or in any way connected with any construction, alterations or additions to premises performed by Operator, any injuries caused by or related to Operator's equipment on premises, and any injuries to participants of organized events or tournaments held on premises and sponsored by Operator.

Operator further agrees that City shall not be liable to Operator if for any reason whatsoever Operator's occupation or use of the premises hereunder shall be hindered or disturbed by third parties, including, but not limited to, park users, weather, animals, or outside enforcement agencies.

19. GENERAL LIABILITY INSURANCE

During the term of this Agreement, Operator shall, at its sole cost and expense, obtain commercial general liability insurance (occurrence policy form) from one or more U.S. domiciled insurance companies licensed to do business in the State of California with an A.M. Best Company rating of "B" or better or, in the alternative, an unlicensed U.S. domiciled company or companies with an "A" rating, which provides coverage for bodily injury, personal injury and property damage liability in the amount of at least \$1,000,000 per occurrence, and \$2,000,000 in the aggregate, with a maximum policy deductible of \$5,000.

The insurance coverage required herein shall be evidenced by a certificate of insurance with policy endorsements and shall be executed by an authorized official of the

insurer(s). In addition to the limits of coverage described above, the certificate of insurance shall provide that the insurer shall provide to City at least 30 days prior notice of cancellation or material change in coverage, or 10 days prior notice of cancellation for non-payment.

Operator acknowledges and agrees that City of Chico, its officers, boards and commissions, and members thereof, its employees and agents, are covered as additional insureds with respect to any liability arising out of the activities of Operator as the named insured. Such additional insured status shall be evidenced by a policy endorsement executed by an authorized official of the insurer(s). A blanket endorsement which provides additional insured status to any person or organization with whom Operator, as named insured, has entered into a written contract, such as this Agreement, shall satisfy this requirement.

The insurance coverage required herein shall be primary insurance with respect to the City of Chico, its officers, officials and employees. Any insurance or self-insurance maintained by the City of Chico, its officers, officials or employees shall be in excess of the insurance afforded to the named insured by the insurance coverage required herein and shall not contribute to any loss. Such primary insurance status shall be evidenced by a policy endorsement issued by an authorized official of the insurer(s). In the alternative, a letter issued by an authorized official of the insurer(s) and copies of the pertinent page(s) of the policy shall satisfy this requirement.

20. NOTICE OF DEFAULT

Operator shall not be deemed to be in default of any of the covenants and conditions of this Agreement, except those covenants and conditions with respect to a sale, assignment, encumbrance or subletting of the leased premises or with respect to abandonment of the leased premises, unless City shall first serve Operator with a notice describing the nature of such default and requiring Operator to cure such default on or before a date not less than 10 days following the date of such notice and Operator shall thereafter fail to cure such default on or before the date specified in such notice.

21. REMEDIES UPON DEFAULT

Upon default by Operator of any of the covenants and conditions of this Agreement the rights of City shall be as follows:

- a. City, without any further notice to Operator, shall have the right to perform those acts in respect to which Operator is in default, and Operator shall thereafter promptly reimburse City for any costs incurred by City in connection therewith together with interest thereon at the legal rate.
- b. City, immediately upon serving notice thereof on Operator, shall also have the right to terminate this Agreement and any and all interest of Operator in and to the

leased premises including all improvements thereon and facilities appurtenant thereto by legal proceedings or otherwise.

All rights and remedies contained herein shall be construed and held to be cumulative and not one of them shall be exclusive of the other and City shall have the right to pursue any one or all of such remedies or any other remedy or relief which may be provided for by law whether or not stated in this Agreement.

22. WAIVER OF DEFAULT

Any waiver by City of a default of this Agreement arising out of the breach of any of the covenants, conditions, or restrictions of this Agreement shall not be construed or held to be a waiver of any succeeding or preceding default arising out of a breach of the same or any other covenant, condition, or restriction of this Agreement.

23. TERMINATION

Either party hereto may terminate this Agreement at any time by giving the other party hereto at least 180 days prior notice of such termination; provided, however, that upon the breach by Operator of any of the terms and conditions of this Agreement, City may terminate this Agreement and Operator's right to occupy and use the premises immediately upon giving notice of such termination to Operator.

24. SALES, ASSIGNMENTS, TRANSFERS, AND ENCUMBRANCES

Due to the unique nature of this Agreement, Operator shall not sell, assign, transfer, or encumber this Agreement or any interest of Operator in and to the premises, in whole or in part, and any such sale, assignment, transfer, encumbrance, whether voluntary or involuntary, shall be void and of no effect.

25. AMENDMENTS

This Agreement may be modified or amended only by a writing duly authorized and executed by both City and Operator. It may not be amended or modified by oral agreement or understanding between the parties unless the same shall be reduced to a writing duly approved and executed by both parties.

26. NOTICES

All notices or demands to be given, made, or sent, or which may be given, made, or sent

by one party to the other pursuant to this agreement shall be deemed to have been given, made, or sent when made in writing, and deposited in the U.S. mail, postage prepaid, addressed as follows:

a. To City: City of Chico
Attention: City Manager
P.O. Box 3420
Chico, CA 95927-3420

b. To Operator: Outside Recreation Advocacy, Inc.
P.O. Box 7762
Chico, CA 95926

The address to which any notice demand, or other writing may be given, made, or sent by any party as above provided may be changed by written notice given by such party as above provided.

IN WITNESS WHEREOF, the parties hereto have executed this Agreement on the effective date first set forth above.

CITY OF CHICO

OUTSIDE RECREATION ADVOCACY,
INC.

David Burkland, City Manager

Lon Glazner

APPROVED AS TO FORM:

Authorized pursuant to Bidwell Park &
Playground Commission
_____.

Lori J. Barker, City Attorney
By: Alicia M. Rock
Assistant City Attorney

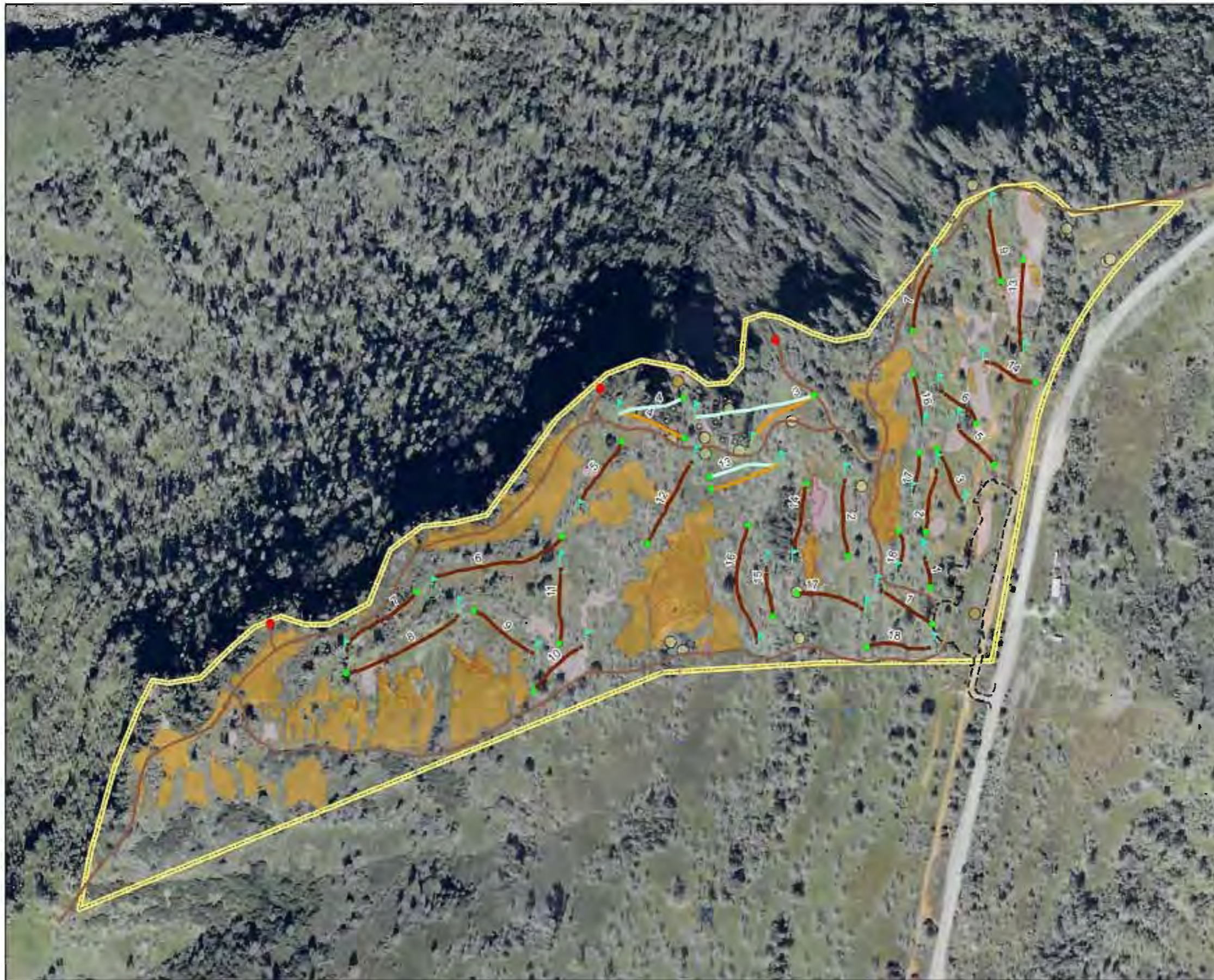


Exhibit B
Modified From:
Bidwell Park Master Management Plan
Conceptual Disc Golf Course Layout
Alternative B

LEGEND

Stuart Data

- Butte County Checkerbloom
- ▨ Bidwell's Knotweed

EDAW Data

- Bidwell's Knotweed, March and May Surveys
- Butte County Checkerbloom, March and May Surveys
- Wildflower Field with Bidwell's Knotweed, May Survey
- Wildflower Field, May Survey

- Overlook
- Tee Location
- Pins
- Summer Fairway
- Winter Fairway
- All Season Fairway
- - - Parking Lot Concept (68 cars)
- Old Humboldt Road Alignment
- - - Drainage
- Proposed Trail
- ▭ Project Boundary

Sources: EDAW 2005, City of Chico 2004, Mike Belchik 2005, Stuart Data 2002

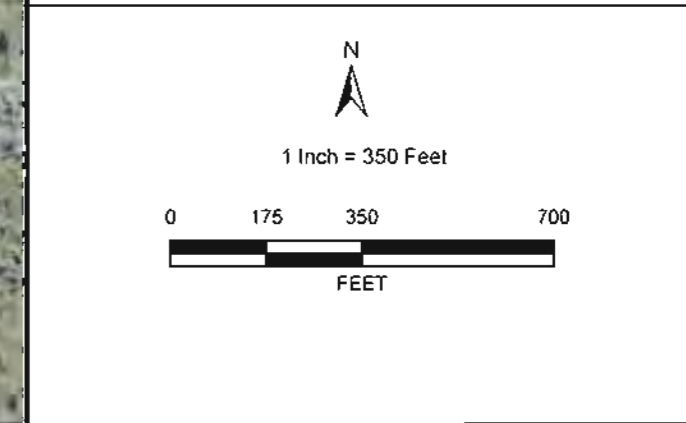


EXHIBIT B
REVISED 12/14/09

TABLE 1-1: MASTER MITIGATION MONITORING PROGRAM FOR THE BIDWELL PARK DISC GOLF/TRAILHEAD AREA CONCEPT PLAN ENVIRONMENTAL IMPACT REPORT

NOTE: THE CITY OF CHICO WILL BE THE AGENCY RESPONSIBLE FOR MONITORING

Mitigation Measure	Party Responsible for Implementation	Funding Responsibility	Implementation Trigger/Timing/ DATE	Frequency
AIR QUALITY				
<p>Mitigation Measure AQ-2: Control Short-term Construction Emissions</p> <p>Consistent with BCAQMD guidelines, the following measures shall be implemented to reduce potentially significant effects on air quality resulting from construction related to the Disc Golf/Trailhead Area Concept Plan Project:</p>			During construction activities	Monitor weekly during construction
a. Alternatives to open burning of vegetative material removed from a project site shall be used unless otherwise deemed infeasible by the AQMD. Among suitable alternatives are chipping, mulching, or conversion to biomass fuel;	No Burning	N/A	TBD	Monitor weekly during construction
b. Adequate and applicable dust control measures (identified in detail below) shall be implemented during all phases of project development and construction as outlined below:	ORAI	ORAI	During construction activities	Monitor weekly during construction
c. All active construction sites shall be watered at least twice daily. Frequency should be based on the type of operation, soil, and wind exposure.	ORAI	ORAI	During construction activities – primarily where vehicles are being used	Implement daily; monitor weekly during construction.
d. Chemical soil stabilizers shall be applied to inactive construction areas (disturbed lands within construction projects that are unused for at least four consecutive days).	ORAI	ORAI	Will review on a case by case basis – may not be needed for small sites	Implement as needed, monitor weekly during construction

EXHIBIT B
REVISED 12/14/09

TABLE 1-1: MASTER MITIGATION MONITORING PROGRAM FOR THE BIDWELL PARK DISC GOLF/TRAILHEAD AREA CONCEPT PLAN ENVIRONMENTAL IMPACT REPORT

Mitigation Measure	Party Responsible for Implementation	Funding Responsibility	Implementation Trigger/Timing/ DATE	Frequency
e. On-site vehicles speeds shall be limited to a speed of 15 mph on unpaved roads.	ORAI	ORAI	TBD	Implement daily; monitor weekly during construction
f. Land clearing, grading, earth moving or excavation activities shall be suspended when winds exceed 20 miles per hour.	ORAI	ORAI	TBD	Implement and monitor as needed
g. Non-toxic binders (e.g., latex acrylic copolymer) shall be applied to exposed areas after cut and fill operations and the area shall be hydroseeded.	ORAI	ORAI (dependent on amount of area)	TBD	Monitor weekly during construction
h. Vegetative ground cover shall be planted in disturbed areas as soon as possible after disturbance.	ORAI	ORAI	TBD	Implement and monitor one time after construction
i. Inactive storage piles shall be covered.	ORAI	ORAI	TBD	Monitor weekly during construction
j. Paved streets adjacent to each project site shall be swept or washed at the end of each day as necessary to remove excessive accumulations of silt and/or mud which may have accumulated as a result of activities on the project site.	ORAI	ORAI	TBD	Implement daily; monitor weekly during construction
k. A publicly visible sign shall be posted with the telephone number and person to contact regarding dust complaints. This person shall respond and take corrective action within 24 hours if a complaint is received. The telephone number of the BCAQMD shall also be visible to ensure compliance with BCAQMD Rule 201 & 207 (Nuisance and Fugitive Dust Emissions).	ORAI	ORAI/City	TBD	Monitor weekly during construction

EXHIBIT B
REVISED 12/14/09

TABLE 1-1: MASTER MITIGATION MONITORING PROGRAM FOR THE BIDWELL PARK DISC GOLF/TRAILHEAD AREA CONCEPT PLAN ENVIRONMENTAL IMPACT REPORT

Mitigation Measure	Party Responsible for Implementation	Funding Responsibility	Implementation Trigger/Timing/ DATE	Frequency
<p>BIOLOGY</p> <p>Mitigation Measure BIO-1b: Implement Measures to Protect Butte County Checkerbloom in the Disc Golf/Trailhead Concept Plan Area</p> <p>The following measures shall be implemented to mitigate potential direct and indirect effects on populations of Butte County checkerbloom from implementation of the Disc Golf/Trailhead Area Concept Plan:</p>			<p>Before ground-disturbing activities and during ongoing operation</p>	<p>TBD</p>
<p>a. As provided in Appendix H of the BPMMP, the Disc Golf/Trailhead Area Concept Plan shall be implemented to avoid direct and indirect impacts on known locations of <u>Butte County checkerbloom</u> on the site. All disc golf structures (e.g., tees, targets, fairways) and trails shall be placed a minimum of 50 feet from locations that <u>currently support Butte County checkerbloom wherever possible</u>. Where this cannot be accomplished due to physical site constraints, the buffer may be reduced, <u>but shall remain at a minimum of 25 feet</u>.</p>	<p>ORAI</p>		<p>TBD</p>	<p>TBD</p>

EXHIBIT B
REVISED 12/14/09

TABLE 1-1: MASTER MITIGATION MONITORING PROGRAM FOR THE BIDWELL PARK DISC GOLF/TRAILHEAD AREA CONCEPT PLAN ENVIRONMENTAL IMPACT REPORT

Mitigation Measure	Party Responsible for Implementation	Funding Responsibility	Implementation Trigger/Timing/ DATE	Frequency
<p>b. <u>Before construction</u> of any facility at the Disc Golf/ Trailhead area in the vicinity of known locations of Butte County <u>checkerbloom, exclusionary fencing shall be installed along a 25-foot buffer around the outer perimeter of the occurrence.</u> Exclusionary fencing shall be installed under the guidance of <u>a qualified botanist</u> before commencement of construction to keep workers and equipment from disturbing existing Butte County checkerbloom plants. The fencing shall be kept in place and periodically inspected and repaired, if necessary, for the duration of construction.</p>	ORAI	ORAI	TBD	Implement during construction; monitor monthly
<p>c. The Disc Golf/Trailhead Area Concept Plan shall restrict foot traffic to clearly defined trails and disc golf features. Trails shall be constructed as narrow as possible to avoid degradation of suitable habitat for Butte County checkerbloom (and other special status plant species). Where existing disc golf structures and trails in the vicinity of existing locations of Butte County checkerbloom will be decommissioned, barriers (such as boulders) shall be placed to discourage use of these trails and structures.</p>	ORAI with qualified botanist	ORAI	TBD	Implement prior to construction; monitor monthly during construction
<p>d. <u>Permanent signage at the trailhead/rest area shall be installed to inform Park users of the presence and sensitivity of Butte County checkerbloom</u> (and other sensitive resources) on the site.</p>	ORAI	ORAI		Implement during construction, monitor monthly during construction

EXHIBIT B
REVISED 12/14/09

TABLE 1-1: MASTER MITIGATION MONITORING PROGRAM FOR THE BIDWELL PARK DISC GOLF/TRAILHEAD AREA CONCEPT PLAN ENVIRONMENTAL IMPACT REPORT

Mitigation Measure	Party Responsible for Implementation	Funding Responsibility	Implementation Trigger/Timing/ DATE	Frequency
<p>e. As provided in Appendix H of the BPMMP, alternate pin locations for Holes 3 and 4 of the long course shall be used from March 1 through July 1 to provide further assurance that potential disturbance of nearby checkerbloom plants during the active growth and blooming period of the plants is minimized.</p>	ORAI	City	TBD	Install after construction; monitor signage annually
<p>f. Per Plant Objective O. P-8 of the BPMMP, an adaptive management program shall be implemented that relies on periodic data collection on the distribution of Butte County checkerbloom at the Disc Golf/ Trailhead site. The goal of this adaptive management program shall be to document and monitor changes in the existing population of Butte County checkerbloom over time. The adaptive management plan is intended to address the fact that, notwithstanding the buffers and signage, the City cannot guarantee that the use of the park will not disturb Butte County checkerbloom</p>	<p style="text-align: center;">ORAI</p> <p>Clarification – The alternate pin location is for Hole 3. There is an alternate Tee location for Hole 4. For Hole 13, the winter fairway will become the all season fairway unless site conditions dictate require changing tee locations. This item is not referenced.</p>	ORAI	TBD	Implement and monitor annually

EXHIBIT B
REVISED 12/14/09

TABLE 1-1: MASTER MITIGATION MONITORING PROGRAM FOR THE BIDWELL PARK DISC GOLF/TRAILHEAD AREA CONCEPT PLAN ENVIRONMENTAL IMPACT REPORT

Mitigation Measure	Party Responsible for Implementation	Funding Responsibility	Implementation Trigger/Timing/ DATE	Frequency
<p>g. If data collection indicates a decline in existing populations after implementation of the Disc Golf/Trailhead Area Concept Plan and Plant Objective O. P-8 of the BPMMP, relocation of trails or disc golf structures in the vicinity of these populations, or other management strategies that would benefit the plants based on the data collected, shall be implemented. This strategy would implement Plant Objective O. P-7 and Plant Implementation Strategies and Guidelines I. P-3 and I. P-4 of the BPMMP. The overall goal of the adaptive management strategy shall be the long-term maintenance of the same number and approximate extent of occurrences of Butte County checkerbloom as documented during the 2005 surveys.</p>	<p style="text-align: center;">ORAI/City</p>	<p>ORAI to reimburse City for surveys of checkerbloom, wildflower fields (Years 1, 3 and 5 and every other year thereafter – cost est. to be \$2,000 per survey)</p>	<p style="text-align: center;">TBD</p>	<p style="text-align: center;">Monitor annually</p>
<p>Mitigation Measure BIO-1d: Implement Measures to Protect Bidwell’s Knotweed at the Disc Golf/Trailhead Area</p> <p>The following measures shall be implemented to mitigate for potential direct and indirect effect to Bidwell’s knotweed at the Disc Golf/Trailhead Concept Plan area:</p>	<p style="text-align: center;">ORAI</p>	<p style="text-align: center;">ORAI</p>	<p style="text-align: center;">TBD</p>	<p style="text-align: center;">Monitor annually; develop program as needed</p>

EXHIBIT B
REVISED 12/14/09

TABLE 1-1: MASTER MITIGATION MONITORING PROGRAM FOR THE BIDWELL PARK DISC GOLF/TRAILHEAD AREA CONCEPT PLAN ENVIRONMENTAL IMPACT REPORT

Mitigation Measure	Party Responsible for Implementation	Funding Responsibility	Implementation Trigger/Timing/ DATE	Frequency
<p>a. The Disc Golf/Trailhead Area Concept Plan shall be implemented to minimize direct and indirect impacts on Bidwell's knotweed habitat on the site. Because Bidwell's knotweed is an annual plant species, population sizes may fluctuate greatly from year to year. Therefore, simply avoiding plants that are present in a given year would not ensure that great numbers of individuals would not be affected in subsequent years. <u>Therefore, a habitat approach shall be taken to minimize impacts on this species. This approach would entail minimizing impacts to wildflower fields, the native plant community that supports Bidwell's knotweed.</u></p>	<p>ORAI/City of Chico</p>	<p>City of Chico</p>	<p>During construction of Disc Golf/Trailhead Area Plans and during ongoing operation</p>	<p>See below</p>

EXHIBIT B
REVISED 12/14/09

TABLE 1-1: MASTER MITIGATION MONITORING PROGRAM FOR THE BIDWELL PARK DISC GOLF/TRAILHEAD AREA CONCEPT PLAN ENVIRONMENTAL IMPACT REPORT

Mitigation Measure	Party Responsible for Implementation	Funding Responsibility	Implementation Trigger/Timing/ DATE	Frequency
<p>b. Consistent with the Disc Golf/Trailhead Area Concept Plan, trails shall generally be placed outside of wildflower fields. The Disc Golf/Trailhead Area Concept Plan shall be implemented to restrict foot traffic to clearly defined trails and disc golf structures. The number of trails dissecting wildflower fields shall be minimized to the fewest number necessary to facilitate reasonable access to the disc golf course and scenic viewpoints, and trails shall be as narrow as possible and have clearly marked edges to reduce widening and discourage users from wandering off the path. Existing trails through wildflower fields that will not be retained as part of the Disc Golf/Trailhead Area Concept Plan shall be decommissioned, and barriers (such as boulders) shall be placed just outside any points where trails enter the wildflower field community to discourage use of these trails.</p>	ORAI	ORAI	TBD	Implement prior to and during construction; monitor weekly during construction
<p>c. <u>Exclusionary fencing shall be installed under the guidance of a qualified botanist before commencement of construction to keep workers and equipment from disturbing wildflower field habitat intended for preservation.</u> High priority shall be given to preserving those wildflower field communities that contained Bidwell's knotweed during surveys conducted in 2005.</p>	ORAI/City	ORAI/City	TBD	Implement prior to and during construction; monitor monthly during construction

EXHIBIT B
REVISED 12/14/09

TABLE 1-1: MASTER MITIGATION MONITORING PROGRAM FOR THE BIDWELL PARK DISC GOLF/TRAILHEAD AREA CONCEPT PLAN ENVIRONMENTAL IMPACT REPORT

Mitigation Measure	Party Responsible for Implementation	Funding Responsibility	Implementation Trigger/Timing/ DATE	Frequency
d. Permanent signage at the trailhead/rest area shall be installed to inform Park users of the presence and sensitivity of Bidwell's knotweed and wildflower field habitat and to deter users from disturbing the species.	ORAI	ORAI	TBD	Implement prior to construction; monitor monthly during construction
e. Per Plant Objective O. P-8 of the BPMMP, an adaptive management program shall be implemented that relies <u>on periodic data collection on the distribution of Bidwell's knotweed at the Disc Golf/ Trailhead site.</u> The goal of this adaptive management program shall be to document and monitor changes in the existing population of Bidwell's knotweed over time.	City	City	TBD	Implement following construction; monitor signage annually
f. If data collection indicates a decline in the number or extent (i.e. square feet) of existing populations after implementation of the Disc Golf/Trailhead Area Concept Plan, relocation of trails or disc golf structures in the vicinity of these populations, or other management strategies that would benefit the plants based on the data collected, shall be implemented. Seasonal and annual variation of the plants in response to environmental conditions such as rainfall shall be taken into consideration when determining if a decline is occurring. This strategy would implement Plant Objective O. P-7 and Plant Implementation Strategies and Guidelines I. P-3 and I. P-4 of the BPMMP.	ORAI	ORAI to reimburse City for surveys of Bidwell's knotweed, wildflower fields (Years 1, 3 and 5 and every other year thereafter – cost est. to be \$2,000 per survey)	TBD	Monitor annually

EXHIBIT B
REVISED 12/14/09

TABLE 1-1: MASTER MITIGATION MONITORING PROGRAM FOR THE BIDWELL PARK DISC GOLF/TRAILHEAD AREA CONCEPT PLAN ENVIRONMENTAL IMPACT REPORT

Mitigation Measure	Party Responsible for Implementation	Funding Responsibility	Implementation Trigger/Timing/ DATE	Frequency
<p>Mitigation Measure BIO-2c: Implement Measures to Protect and Compensate for Loss of Vernal Pool Invertebrate and Western Spadefoot Habitat</p> <p>The City shall ensure that the following measures are implemented to avoid, minimize, and mitigate potential project effects on vernal pool invertebrates and western spadefoot:</p>	ORAI	ORAI		Monitor annually; develop program as needed
<p>a. Before any ground-disturbing project activities begin, the City shall retain a qualified biologist to identify and map potential habitat in areas that could be affected by the given project. The City shall ensure, through coordination with the biologist, that the footprint of project features and construction zones, staging areas, and access routes are designed to avoid direct or indirect effects on suitable habitat for vernal pool invertebrates and western spadefoot to the extent feasible and practicable. In addition to vernal pools, suitable habitat for western spadefoot includes the surrounding grassland matrix.</p>	ORAI - biologist	ORAI	Before and during construction in and near vernal pool habitats and Western spadefoot habitats.	Implement prior to and during construction; monitor as indicated below

EXHIBIT B
REVISED 12/14/09

TABLE 1-1: MASTER MITIGATION MONITORING PROGRAM FOR THE BIDWELL PARK DISC GOLF/TRAILHEAD AREA CONCEPT PLAN ENVIRONMENTAL IMPACT REPORT

Mitigation Measure	Party Responsible for Implementation	Funding Responsibility	Implementation Trigger/Timing/ DATE	Frequency
<p>b. If vernal pool invertebrate and western spadefoot habitat cannot be avoided, measures shall be implemented to minimize and mitigate unavoidable effects. Before beginning any ground-disturbing project activities in such habitat, USFWS shall be consulted to identify appropriate measures to minimize and compensate for adverse effects on special-status vernal pool invertebrates; DFG shall be consulted to identify measures to minimize and compensate for adverse effects on western spadefoot. Avoidance and minimization measures shall include those described in USFWS's vernal pool crustacean Programmatic Consultation (USFWS 1996a). Minimization measures for vernal pool invertebrates shall include, but would not be limited to, fencing of habitat to be avoided, timing of ground disturbance to correspond with the dry season, conducting worker awareness training, and periodic biological monitoring. Compensation shall include preservation, enhancement, and/or creation of suitable habitat in areas that currently, or could in the future, support special-status invertebrate and/or spadefoot populations.</p>	<p>City/ORAI</p>		<p>TBD</p>	<p>TBD</p>
<p>c. Authorization for take of vernal pool invertebrates under ESA shall be obtained if it is determined that implementation of a program component is likely to result in take, despite implementation of avoidance and minimization measures.</p>	<p>City – None Exist</p>	<p>City</p>	<p>n/a</p>	<p>Implement prior to construction; monitor monthly during construction</p>

EXHIBIT B
REVISED 12/14/09

TABLE 1-1: MASTER MITIGATION MONITORING PROGRAM FOR THE BIDWELL PARK DISC GOLF/TRAILHEAD AREA CONCEPT PLAN ENVIRONMENTAL IMPACT REPORT

Mitigation Measure	Party Responsible for Implementation	Funding Responsibility	Implementation Trigger/Timing/ DATE	Frequency
<p>d. All other measures developed through informal consultation with USFWS and DFG shall be implemented, as well as any additional measures adopted through a formal permitting process, if applicable.</p>	City - None Exist	City	n/a	Implement prior to construction
<p>Measures to Protect Nesting Raptors and Burrowing Owls</p> <p>The following measures shall be implemented to minimize and mitigate the potential disturbance of nesting raptors and burrowing owls.</p>				Implement prior to construction
<p>Mitigation Measure BIO-2d(1): Protect Tree-Nesting Raptors</p> <p>a. Before project construction, it shall be determined whether any construction or tree removal is proposed during the raptor nesting season (February 1 to August 31). If no construction or tree removal will occur during the raptor nesting season, no further mitigation shall be necessary.</p>	ORAI (construction)	n/a	n/a	Implement prior to, during and after construction; monitor as required
<p>b. <u>If construction or tree removal is proposed</u> during the raptor nesting season, a focused survey for special-status and common raptor nests shall be conducted by a qualified biologist during the nesting season to identify active nests within 500 feet of the project area. <u>The survey shall be conducted no less than 14 days and no more than 30 days before the beginning of construction or tree removal.</u></p>	TBD	TBD	TBD	See below

EXHIBIT B
REVISED 12/14/09

TABLE 1-1: MASTER MITIGATION MONITORING PROGRAM FOR THE BIDWELL PARK DISC GOLF/TRAILHEAD AREA CONCEPT PLAN ENVIRONMENTAL IMPACT REPORT

Mitigation Measure	Party Responsible for Implementation	Funding Responsibility	Implementation Trigger/Timing/ DATE	Frequency
<p>c. If nesting raptors are found during the focused survey, impacts shall be avoided by establishment of appropriate buffers. <u>No project activity shall commence within the buffer area until a qualified biologist confirms that the nest is no longer active. The DFG guidelines for a 500 foot buffer will be implemented, but the size of the buffer may be adjusted if a qualified biologist determines a greater or lesser buffer would be appropriate and DFG concurs with any determination for a lesser buffer.</u> The City shall coordinate with DFG on the appropriate buffer width for each species documented. Monitoring of the nest by a qualified biologist may be required if the activity has potential to adversely affect the nest or disturb the birds using the nest to the point of causing nest failure.</p>	<p>ORAI - biologist</p>	<p>ORAI</p>	<p>Before and during construction during the breeding season of tree-nesting raptors</p>	<p>Implement prior to construction</p>

EXHIBIT B
REVISED 12/14/09

TABLE 1-1: MASTER MITIGATION MONITORING PROGRAM FOR THE BIDWELL PARK DISC GOLF/TRAILHEAD AREA CONCEPT PLAN ENVIRONMENTAL IMPACT REPORT

Mitigation Measure	Party Responsible for Implementation	Funding Responsibility	Implementation Trigger/Timing/ DATE	Frequency
<p>Mitigation Measure BIO-2d(2): Protect Peregrine Falcon</p> <p>a. <u>If construction at the Disc Golf/Trailhead Area Concept Plan site is to occur during the peregrine falcon breeding period (generally February 1 to June 30), an appropriate buffer around the southern cliff edge shall be determined by a qualified biologist and construction activities shall be avoided within the buffer zone unless a qualified biologist confirms there is no active nest on the cliff.</u></p>	No Trees to be removed for disc golf.	ORAI	TBD	Implement prior to construction
<p>b. If construction commences between June 30 and February 1, no buffer will be necessary.</p>	ORAI - biologist	ORAI	TBD	Implement during construction
<p>Mitigation Measure BIO-2f: Implement Measures to Protect Other Special-status Nesting Birds</p> <p>The following measures shall be implemented to minimize and mitigate the potential disturbance of nesting special-status birds (February to August).</p>	ORAI - biologist	ORAI	Before and during construction during the breeding season of peregrine falcons known to nest below the South Rim	Implement during construction
<p>a. The City shall design Park Improvement Projects to minimize disturbance and removal of nesting habitat for special-status nesting birds to the extent feasible and practicable. Nesting habitat that cannot be avoided shall be removed during the non-nesting season, to the extent feasible and practicable.</p>	ORAI		TBD	Implement during construction

EXHIBIT B
REVISED 12/14/09

TABLE 1-1: MASTER MITIGATION MONITORING PROGRAM FOR THE BIDWELL PARK DISC GOLF/TRAILHEAD AREA CONCEPT PLAN ENVIRONMENTAL IMPACT REPORT

Mitigation Measure	Party Responsible for Implementation	Funding Responsibility	Implementation Trigger/Timing/ DATE	Frequency
<p>b. <u>To avoid potential impacts to active nests of special-status birds, a qualified biologist shall conduct preconstruction surveys to identify active special-status bird nests within 500 feet of construction areas.</u> The survey shall be conducted no more <u>than 10 days before project activities begin.</u> If an active nest is found, an appropriate buffer to minimize impacts shall be determined by a qualified biologist in coordination with DFG. No project activities shall commence within the buffer area until a qualified biologist confirms that the nest is no longer active or the birds are not dependent upon it. The size of the buffer may vary, depending on the nest location, nest stage, and construction activity.</p>	ORAI		Before and during construction during the breeding season of yellow warbler, yellow-breasted chat, and loggerhead shrike.	See below
<p>Mitigation Measure BIO-3c: Implement Measures to Protect Oak Woodland</p> <p>The following measures shall be implemented to mitigate potential impacts on oak woodlands resulting from implementation of the Disc Golf/Trailhead Area Concept Plan:</p>	ORAI	ORAI		Implement during construction

EXHIBIT B
REVISED 12/14/09

TABLE 1-1: MASTER MITIGATION MONITORING PROGRAM FOR THE BIDWELL PARK DISC GOLF/TRAILHEAD AREA CONCEPT PLAN ENVIRONMENTAL IMPACT REPORT

Mitigation Measure	Party Responsible for Implementation	Funding Responsibility	Implementation Trigger/Timing/ DATE	Frequency
<p>a. Where possible, trails, improvements, and facilities shall be constructed outside of oak woodlands. The number of trails dissecting oak woodlands shall be minimized to the fewest number necessary to accomplish the goals of the site-specific Park Improvement Projects. The width of trails through oak woodlands shall be minimized and trails shall have clearly marked edges that discourage trail widening and deter users from straying off the designated trail.</p>	ORAI – biologist	ORAI	TBD	Implement prior to construction
<p>b. Trails through oak woodlands that are decommissioned as part of a site-specific Park Improvement Project shall be reclaimed using barriers (such as boulders) to discourage continued use of these trails.</p>	City of Chico		Before and during construction activities within or in the immediate vicinity of oak woodland habitat; ongoing for site management of the Disc Golf/ Trailhead Area Concept Plan site.	See below
<p>c. <u>Grading, trenching, equipment storage, and other soil-disturbing or compacting activities shall not occur within the driplines of oak trees.</u> New structures and impervious-surface materials shall not be placed in the driplines of oaks, except where deemed necessary to reduce the footprint size of tees as part of the proposed Disc Golf/Trailhead Concept Plan and to reduce soil compaction.</p>	ORAI	ORAI	TBD	Implement during construction

EXHIBIT B
REVISED 12/14/09

TABLE 1-1: MASTER MITIGATION MONITORING PROGRAM FOR THE BIDWELL PARK DISC GOLF/TRAILHEAD AREA CONCEPT PLAN ENVIRONMENTAL IMPACT REPORT

Mitigation Measure	Party Responsible for Implementation	Funding Responsibility	Implementation Trigger/Timing/ DATE	Frequency
<p>d. To ensure that the driplines of oaks are not disturbed during construction, protective fencing shall be installed, under the guidance of a qualified botanist, certified arborist, or Registered Professional Forester, at least 1 foot beyond the outer edge of the driplines of all oaks that grow within the construction zones of the site-specific Park Improvement Projects, and no project activities shall be allowed within these exclusion zones, unless specifically required as part of project construction.</p>	ORAI	ORAI - City	TBD	Implement during and following construction; monitor annually
<p>e. The oak woodland management guidelines contained in Section 3 of the NRMP (Appendix C of the BPMMP) shall be implemented. These guidelines include recommendations for sustaining oak woodlands, initiating a burning program, and maintaining the oak landscape.</p>	ORAI	ORAI	TBD	Implement during and following construction; monitor monthly during construction
<p>f. In addition to the measures outlined above, the following additional measures shall be implemented in connection with development and ongoing maintenance of the proposed Disc Golf/Trailhead Concept Plan to protect oaks <u>and to mitigate for any unavoidable loss resulting from mortality over time.</u> These measures are based on site observations, oak woodland management guidelines provided by DFG, and measure recommended in the tree assessment (Appendix E4):</p>	ORAI	ORAI	TBD	Implement prior to and during construction; monitor monthly during construction

EXHIBIT B
REVISED 12/14/09

TABLE 1-1: MASTER MITIGATION MONITORING PROGRAM FOR THE BIDWELL PARK DISC GOLF/TRAILHEAD AREA CONCEPT PLAN ENVIRONMENTAL IMPACT REPORT

Mitigation Measure	Party Responsible for Implementation	Funding Responsibility	Implementation Trigger/Timing/ DATE	Frequency
g. Any modification to the proposed design and layout of the site shall be subject to the same impact avoidance and minimization criteria as the initial design;	ORAI/City	ORAI-City	TBD	During and following construction
h. Information describing the value of native oak trees and the importance of the preservation and protection of oak woodland for wildlife habitat and the aesthetic values of Bidwell Park shall be provided at the informational kiosk at the Disc Golf/Trailhead area site. The information shall discuss the importance of avoiding direct impacts resulting from bark and limb damage as well as indirect effects such as soil compaction/root damage and shall encourage site users to act responsibly and prevent adverse effects.	ORAI - City	ORAI to reimburse City for surveys of oaks (Years 1, 3 and 5 and every other year thereafter – cost est. to be \$1,000 per survey	TBD	Implement during and following construction
i. In cases where disc golf pins are located within groves of oak trees or oak trees are within fairways, measures to protect the tree trunks such as the installation of shielding pole structures shall be implemented. Installation shall be implemented without damage to the root zone, and in a manner that preserves the visual character of the site.	ORAI /City	ORAI/City	TBD	Implement during and following construction

EXHIBIT B
REVISED 12/14/09

TABLE 1-1: MASTER MITIGATION MONITORING PROGRAM FOR THE BIDWELL PARK DISC GOLF/TRAILHEAD AREA CONCEPT PLAN ENVIRONMENTAL IMPACT REPORT

Mitigation Measure	Party Responsible for Implementation	Funding Responsibility	Implementation Trigger/Timing/ DATE	Frequency
j. In cases where tees or trails are located within driplines of oaks or in the immediate vicinity of driplines, a 6 inch layer of woodchip mulch shall be applied to a 20' radius around the tees and on the trails to minimize soil compaction; this layer shall be maintained on an ongoing basis, as needed, to ensure continued protection of the root zones.	City	City	TBD	Implement following construction; inspect signage annually
k. Periodic monitoring of the oaks at the site shall be conducted to determine if any unavoidable impacts are occurring as a result of site use, in spite of the impact minimization measures.	ORAI	ORAI	TBD	Implement during and following construction; monitor annually
l. Any unavoidable impacts to oaks resulting from construction, or tree mortality resulting from ongoing use of the site shall be mitigated by replanting oak woodland habitat at the Disc Golf/Trailhead site in areas located outside of the footprint of facilities and trails in areas not currently occupied by other sensitive resources and suitable to support blue oak woodland.	ORAI	ORAI	TBD	Implement during and following construction; monitor annually
m. Oak planting should be from seeds (acorns) or seedlings that are obtained from the local genetic stock and should be of the same species as those targeted for replacement. Replacement ratios shall be at least 5:1 for trees lost/replaced that are greater than 5 inches diameter at breast height.	ORAI	To be accomplished above B10-3c-f	TBD	Monitor at least twice yearly following construction

EXHIBIT B
REVISED 12/14/09

TABLE 1-1: MASTER MITIGATION MONITORING PROGRAM FOR THE BIDWELL PARK DISC GOLF/TRAILHEAD AREA CONCEPT PLAN ENVIRONMENTAL IMPACT REPORT

Mitigation Measure	Party Responsible for Implementation	Funding Responsibility	Implementation Trigger/Timing/ DATE	Frequency
n. Oak plantings shall be protected from browsing, planted on the north and east side of existing trees, and irrigated during the first few years as outlined in the oak assessment (Appendix E4) to enhance their chance of survival.	ORAI/City Relating to disc golf facilities only.	ORAI/City	TBD	Implement as needed after construction
o. Replacement plantings shall be monitored for their success for a period of five years or until the desired performance criterion of 5:1 is achieved, whichever is longer. If planting does not succeed, remedial actions such as replanting shall be implemented.	ORAI/City	ORAI/City	TBD	Implement and monitor as needed after construction
p. If requested, community/user group stewardship of the plantings shall be allowed to contribute to restoration/revegetation efforts under guidance and supervision by City staff.	ORAI/City	ORAI/City	TBD	Implement and monitor as needed after construction
<p>Mitigation Measure BIO-3d: Implement Measures to Protect Wildflower Fields</p> <p>The following measures shall be implemented to minimize potential disturbances to wildflower field communities resulting from implementation of the Disc Golf/Trailhead Area Concept Plan:</p>	ORAI/City	ORAI/City		Monitor yearly after planting for five years or until success criteria are achieved
a. Mitigation Measure BIO-1d shall be implemented to minimize adverse effects on wildflower fields resulting from implementation of the Disc Golf/Trailhead Area Concept Plan.	City/City	City/City	TBD	Implement after construction

EXHIBIT B
REVISED 12/14/09

TABLE 1-1: MASTER MITIGATION MONITORING PROGRAM FOR THE BIDWELL PARK DISC GOLF/TRAILHEAD AREA CONCEPT PLAN ENVIRONMENTAL IMPACT REPORT

Mitigation Measure	Party Responsible for Implementation	Funding Responsibility	Implementation Trigger/Timing/ DATE	Frequency
b. Whenever possible, trail segments, site improvements, facilities and other design features shall be located to minimize impacts to wildflower fields.	City of Chico	City of Chico	Before and during construction of components of the Disc Golf/ Trailhead Area Concept Plan that occur within the immediate vicinity of wildflower fields	See below
c. Exclusionary fencing shall be installed under the guidance of a qualified botanist before commencement of construction to keep workers and equipment from disturbing wildflower field habitat intended to be preserved on the project sites (some areas may be lost, consistent with site design).	ORAI	ORAI	TBD	Implement during construction; monitor as indicated above
d. The number of trails dissecting wildflower fields shall be minimized to the fewest number necessary to accomplish the goals of the site-specific Park Improvement Projects.	ORAI	ORAI	TBD	Implement prior to and during construction; inspect monthly during construction
e. Trails through wildflower fields shall be as narrow as possible and shall have clearly marked edges that discourage trail widening and deter users from straying off the designated trail.	ORAI	ORAI	TBD	Implement prior to and during construction; inspect monthly during construction
f. Existing trails through wildflower fields that will not be retained as part of the site-specific Park Improvement Projects shall be reclaimed using barriers (such as boulders) to discourage use of these trails. If these reclaimed trails fail to revegetate on their own over time, re-seeding may be considered.	ORAI	ORAI	TBD	Implement prior to and during construction

EXHIBIT B
REVISED 12/14/09

TABLE 1-1: MASTER MITIGATION MONITORING PROGRAM FOR THE BIDWELL PARK DISC GOLF/TRAILHEAD AREA CONCEPT PLAN ENVIRONMENTAL IMPACT REPORT

Mitigation Measure	Party Responsible for Implementation	Funding Responsibility	Implementation Trigger/Timing/ DATE	Frequency
g. Permanent signage shall be installed at kiosks located at the Disc Golf/Trailhead Area Concept Plan site to inform Park users of the presence and sensitivity of the wildflower field community and discourage visitors from off-trail use and trampling of vegetation.	ORAI	ORAI	TBD	Implement prior to and during construction
<p>Mitigation Measure BIO-4: Implement Measures to Protect Jurisdictional Wetlands</p> <p>The following measures shall be implemented to mitigate impacts on waters of the United States:</p> <p>a. Before the implementation of specific components of the Disc Golf/Trailhead Area Concept Plan that occur in the immediate vicinity of wetlands or other waters of the United States, a delineation of waters of the United States, including wetlands, that would be affected by the proposed projects shall be made by qualified biologists through the formal Section 404 wetland delineation process. The delineation shall be submitted to and verified by USACE.</p>	ORAI/City of Chico	ORAI		Prior to, during and after construction; monitor annually
b. If, based on the verified delineation, it is determined that fill of waters of the United States would result from implementation of any of the site-specific Park Improvement Projects, authorization for such fill shall be secured from USACE through the Section 404 permitting process.	City	City		Install after construction; monitor annually

EXHIBIT B
REVISED 12/14/09

TABLE 1-1: MASTER MITIGATION MONITORING PROGRAM FOR THE BIDWELL PARK DISC GOLF/TRAILHEAD AREA CONCEPT PLAN ENVIRONMENTAL IMPACT REPORT

Mitigation Measure	Party Responsible for Implementation	Funding Responsibility	Implementation Trigger/Timing/ DATE	Frequency
c. The acreage of waters of the United States, including wetlands, that would be adversely affected by project construction shall be replaced or restored/enhanced on a “no net loss” basis in accordance with USACE regulations and City General Plan Policy OS. G-9. Habitat restoration, enhancement, and/or replacement shall be at a location and by methods agreeable to USACE, as determined during the Section 404 permitting process.	City of Chico None Exist	City of Chico	Before and concurrent with any component of the Disc Golf/Trailhead Area Concept Plan that involve ground-disturbing activities in or near jurisdictional wetlands and/or waters of the state	Implement prior to construction N/A
d. Purchasing credits at a mitigation bank is the City’s preferred method of mitigation.	None exist		n/a	Implement prior to construction N/A
e. Concurrently with the CWA Section 404 permit, the City shall obtain CWA Section 401 Clean Water Certification from the Central Valley RWQCB before project implementation.	None exist		n/a	Implement prior to construction N/A
f.	N/A			Implement prior to construction N/A
g.	N/A			Implement prior to construction N/A

EXHIBIT B
REVISED 12/14/09

TABLE 1-1: MASTER MITIGATION MONITORING PROGRAM FOR THE BIDWELL PARK DISC GOLF/TRAILHEAD AREA CONCEPT PLAN ENVIRONMENTAL IMPACT REPORT

Mitigation Measure	Party Responsible for Implementation	Funding Responsibility	Implementation Trigger/Timing/ DATE	Frequency
h. The City shall also coordinate with the Central Valley RWQCB regarding any wetland features that are not subject to USACE jurisdiction under Section 404 of the CWA, but may be subject to State regulation under the Porter Cologne Act. All conditions required by the RWQCB as part of the Section 401 Water Quality Certification process or Porter Cologne permitting process shall be implemented.	n/a		n/a	Implement prior to construction
CULTURAL RESOURCES				
Mitigation Measure CUL-1: Protect Historic and Unique Archaeological Resources from Impacts The City shall implement the following mitigation to reduce potential direct impacts on historic and unique archaeological resources:	City of Chico	City of Chico	During final design of projects and during construction activities	See below
a. Consistent with the policies of the BPMMP, a qualified archaeologist shall conduct a cultural resources assessment of the proposed project site during project planning and design. For the Trails Plan, this can be accomplished on a segment by segment basis.	Done		n/a	This part of the measure has been completed
b. If cultural resources are documented in the planning area, they shall be evaluated for their significance.	Done		n/a	This part of the measure has been completed

EXHIBIT B
REVISED 12/14/09

TABLE 1-1: MASTER MITIGATION MONITORING PROGRAM FOR THE BIDWELL PARK DISC GOLF/TRAILHEAD AREA CONCEPT PLAN ENVIRONMENTAL IMPACT REPORT

Mitigation Measure	Party Responsible for Implementation	Funding Responsibility	Implementation Trigger/Timing/ DATE	Frequency
c. If it has been determined by a qualified archaeologist that a cultural resource is significant, the project shall be designed or redesigned to avoid these cultural resources to the greatest extent feasible.	Done		n/a	This part of the measure has been completed
d. If avoidance of significant sites is not feasible, mitigation in the form of data recovery shall be applied to archaeological sites.	City – none known			Implement during construction; monitor monthly

EXHIBIT B
REVISED 12/14/09

TABLE 1-1: MASTER MITIGATION MONITORING PROGRAM FOR THE BIDWELL PARK DISC GOLF/TRAILHEAD AREA CONCEPT PLAN ENVIRONMENTAL IMPACT REPORT

Mitigation Measure	Party Responsible for Implementation	Funding Responsibility	Implementation Trigger/Timing/ DATE	Frequency
<p>e. For portions of the Humboldt Wagon Road that cannot be avoided during implementation of the Disc Golf/ Trailhead Concept Plan, impacts would result in destruction of a portion of the route and intrusion of newer elements that would alter the immediate surroundings. As outlined in the management plan (see Jensen, et al. 1996; Table 2), this segment of the road appears significant based upon the associated archaeological deposit (NRHP Criterion D/CRHR Criterion 4), which will not be impacted by construction, and the association of the wagon road with John Bidwell. As currently designed, neither Alternative A nor Alternative B will result in destruction or alteration of the surroundings of the archeological deposit, and would impact only a percentage of the route associated with the original person responsible for its construction, John Bidwell. The surrounding environment of this segment of the route has been previously impacted by construction of a more recent dirt road that parallels the</p>	<p>Will be preserved – ORAI - City</p>		<p>TBD</p>	<p>Implement during construction; monitor monthly</p>

EXHIBIT B
REVISED 12/14/09

TABLE 1-1: MASTER MITIGATION MONITORING PROGRAM FOR THE BIDWELL PARK DISC GOLF/TRAILHEAD AREA CONCEPT PLAN ENVIRONMENTAL IMPACT REPORT

Mitigation Measure	Party Responsible for Implementation	Funding Responsibility	Implementation Trigger/Timing/ DATE	Frequency
<p>contemporary route of Highway 32, such that the immediate surroundings have been altered from what was present during the historic period. Therefore, because neither alternative would impact the archaeological deposit or substantially impair the significance of the resource as it relates to its association with a person of historic importance (NRHP Criterion B/CRHR Criterion 2), both alternatives would result in less-than-substantial adverse changes in the significance of this resource.</p>				
<p>f. Mitigation of any adverse changes resulting from direct impacts caused by implementation of the Disc Golf/Trailhead Area Concept Plan shall take the form of interpretive signage presenting an historic overview and the historic importance of the Humboldt route.</p>	<p>City if needed</p>		<p>TBD</p>	<p>Install signage after construction; monitor annually</p>

EXHIBIT B
REVISED 12/14/09

TABLE 1-1: MASTER MITIGATION MONITORING PROGRAM FOR THE BIDWELL PARK DISC GOLF/TRAILHEAD AREA CONCEPT PLAN ENVIRONMENTAL IMPACT REPORT

<p>Mitigation Measure CUL-2b: Protect Human Remains from Vandalism and Inadvertent Destruction</p> <p>a. In accordance with the California Health and Safety Code, if human remains are uncovered during ground-disturbing activities related to implementation of the Disc Golf/Trailhead Area Concept Plan Project, all such activities in the vicinity of the find shall be halted immediately and the City or the City's designated representative shall be notified. The City shall immediately notify the county coroner and a qualified professional archaeologist. The coroner shall examine all discoveries of human remains within 48 hours of receiving notice of a discovery on private or state lands (Health and Safety Code Section 7050.5[b]). If the coroner determines that the remains are those of a Native American, he or she shall contact the Native American Heritage Commission (NAHC) by phone within 24 hours of making that determination (Health and Safety Code Section 7050[c]). The responsibilities of the City for acting upon notification of a discovery of Native American human remains are identified in detail in the California Public Resources Code Section 5097.9. The City or its appointed representative (Park Director) and the professional archaeologist shall consult with a Most Likely Descendant (MLD) determined by the NAHC regarding the removal or preservation and avoidance of the remains and determine whether additional burials could be present in the vicinity.</p>	<p>ORAI - City of Chico</p>	<p>ORAI - City of Chico</p>	<p>During construction activities</p>	<p>Implement during construction</p>
---	-----------------------------	-----------------------------	---------------------------------------	--------------------------------------

EXHIBIT B
REVISED 12/14/09

TABLE 1-1: MASTER MITIGATION MONITORING PROGRAM FOR THE BIDWELL PARK DISC GOLF/TRAILHEAD AREA CONCEPT PLAN ENVIRONMENTAL IMPACT REPORT

Mitigation Measure	Party Responsible for Implementation	Funding Responsibility	Implementation Trigger/Timing/ DATE	Frequency
HYDROLOGY				
<p>Mitigation Measure HYDRO-1b: Comply with Water Quality Standards and Waste Discharge Requirements</p> <p>a. When required, the City shall obtain a General Permit for Discharges of Storm Water associated with Construction Activity (Construction General Permit), which pertains to water pollution resulting from project construction. In compliance with permit requirements, the City shall file a Notice of Intent (NOI) with the State Water Resources Control Board (SWRCB) and prepare a Storm Water Pollution Prevention Plan (SWPPP) before commencement of construction activities. The SWPPP will incorporate BMPs to prevent, or reduce to the greatest extent feasible, adverse effects on water quality from erosion and sedimentation. In addition, all new trails shall be designed, constructed, and maintained per the City's Trails Manual.</p>	City of Chico	City of Chico	Before commencement of construction activities	Implement and monitor as indicated in SWPPP
NOISE				
<p>Mitigation Measure Noise-1: Construction Related Noise</p> <p>The following measures shall be implemented to mitigate for construction noise control associated with the Disc Golf Trailhead Area Concept Plan Project:</p>	City of Chico	City of Chico	During construction of Park Improvement Projects	N/A

EXHIBIT B
REVISED 12/14/09

TABLE 1-1: MASTER MITIGATION MONITORING PROGRAM FOR THE BIDWELL PARK DISC GOLF/TRAILHEAD AREA CONCEPT PLAN ENVIRONMENTAL IMPACT REPORT

Mitigation Measure	Party Responsible for Implementation	Funding Responsibility	Implementation Trigger/Timing/ DATE	Frequency
a. Construction equipment shall be properly maintained and equipped with noise control, such as mufflers, in accordance with manufacturers' specifications	ORAI	ORAI	TBD	N/A
b. Construction activities shall be limited to the hours of 7:00 a.m.–9:00 p.m., Monday through Saturday, and to 10:00 a.m.–6:00 p.m. on Sundays and holidays.	ORAI		TBD	N/A
c. Construction equipment shall be arranged to minimize travel adjacent to occupied residences and turned off during prolonged periods of non-use.	ORAI		TBD	N/A
TRAFFIC				
<p>Mitigation Measure Traffic-4: Coordinate with Caltrans</p> <p>a. To address the potential increase in traffic hazards resulting from implementation of the Disc Golf/Trailhead Area Concept Plan, the City shall coordinate with Caltrans to obtain an encroachment permit for construction of the site access and parking lot for the Disc Golf/Trailhead area. As part of the consultation with Caltrans, the City shall address the potential need for additional signage and/or a left turning lane to address traffic safety along SR 32. The City shall implement any measures deemed necessary by Caltrans as a condition of the encroachment permit or as a result of the consultation on safety.</p>	City of Chico	City of Chico	Prior to construction of the Disc Golf/Trailhead Area Concept Plan	N/A

OPERATING AGREEMENT
FOR RECREATIONAL SERVICES IN BIDWELL PARK
(CITY OF CHICO/OUTSIDE RECREATION ADVOCACY, INC.)

EXHIBIT C

FOUR-YEAR IMPLEMENTATION PLAN

	<u>Years(s)</u>
1. Complete Phase 1 - 18-hole long course	1 to 2 (18 mo.)
2. Complete Phase 2 - 18-hole off site targets	1 to 2 (18 mo.)
3. Complete Phase 3 - 12-hole short course.	4

FOR RECREATIONAL SERVICES IN BIDWELL PARK
(CITY OF CHICO/OUTSIDE RECREATION ADVOCACY, INC.)

EXHIBIT D
ANNUAL CALENDAR OF IMPLEMENTATION AND CHECK-LIST

By 1 December of every Agreement Year	Club will submit to City its proposed work plan for capital improvements.
By 1 October of	Club or City must notify the other party of its intention to appropriate years exercise its option to extend the term of this Agreement.
By 1 January of every	City will advise Club of the acceptance of Club's work plan Agreement Year for improvements or will notify Club that such plan is unacceptable and, at City's discretion, will request changes by Club or refer the matter to a mediation panel.
On or before 1 May	Representatives of City and Club will meet, confer and coordinate of each Agreement Year regarding site activities and management issues.
By December 1, 2011	City decide on off-site of short course and communicate in writing same to Club.
By January 15, 2012	If authorized, Club submit implementation plan for Hwy 32 12 hole short course.
By May 19, 2014	City determination of alternate location for short disc golf course.