

SWRP PROJECT DESCRIPTION: TRASH REDUCTION MASTER PLAN AND SPECIFIC IMPLEMENTATION PROJECTS (SWRP PROJECT I)

General Project Information

This project is a plan to reduce trash entering receiving waters throughout Chico. The intent of this plan is to meet the State's Trash Amendments, clean-up the community, and enhance beneficial uses of receiving waters by improving water quality and aquatic habitat. The master plan will identify specific trash reduction projects and activities to be implemented over a time period that meets the requirements of the Trash Amendments and is affordable and fundable by the City. This project includes:

- Devices that meet full trash capture requirements (such as hydrodynamic separators, outfall nets, and pipe screens) will be identified and located.
- Projects that provide multiple benefits will also be evaluated, such as projects that meet the State's full capture requirements but also provide infiltration or reduce runoff (such as detention basins, infiltration trenches, and bioretention).
- The desirability of switching to Track 2 as well as the City's current efforts to reduce trash (i.e. street sweeping, community clean-ups) will also be explored. Some options for expanding public outreach include:
 - Develop an education and outreach plan that builds on existing community efforts, such as "Block Parties for a Purpose", and on-going community clean-up events.
 - Develop an incentive program to reduce residential trash being dumped into creeks (E-recycling, trash coupons for large household items, medical waste recycling, etc.)
 - Develop a way for Park Watch and other related community groups to track trash hot spots.

Specific projects have already been identified where trash control would have a large beneficial impact and these areas will be evaluated in more depth in the plan.

- The Meyers Street Industrial Park and Otterson Drive Industrial Park are both considered high trash generating areas and discharge to Comanche Creek. An installation of a trash capture device that meets full trash capture requirements may be installed on the storm drain prior to discharge. The existing storm drain for Otterson Drive can be daylighted to a grassy swale prior to discharge to the creek to promote infiltration.
- The Crouch Ditch watershed includes high priority land uses and discharges to Comanche Creek just downstream of the Meyers Street Industrial Park. An installation of a trash capture device that meets full trash capture requirements may be installed on the storm drain prior to discharge.
- The Teichert Ponds and Fair Street detention basin could be modified at a relatively low cost to provide trash capture at inlets or outlets to meet the Trash Amendment requirements.
- The 190-acre watershed for the storm drain that discharges into Lindo Channel behind Chico Nut includes high trash generating land uses as well as illegal encampments. A trash capture device on the storm drain outfall could help reduce trash in Lindo Channel.
- **Location:** Throughout the City of Chico, with projects already identified at two business parks and two of the City's detention basins.
- **Tributary Watershed Area:** 21,268 acres (City extents)

Benefits resulting from this project

This project includes the preparation of the Trash Capture Master Plan. When the Trash Capture Master Plan is fully implemented, the following benefits are expected to occur:

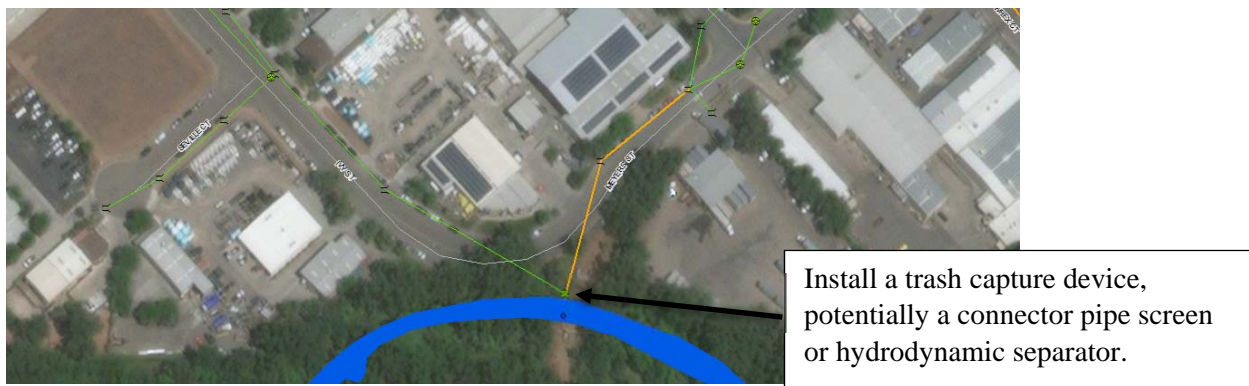
- **Water Quality:** Water Quality is expected to be improved because there will be a reduction of trash/pollutants in receiving waters.

- **Water Supply:** Water supply is not expected to change.
- **Flood Management:** Flood Management is not expected improve.
- **Environmental:** The environment is expected to be improved because a reduction of trash in the receiving waters will improve the beneficial uses of receiving waters (i.e. habitat, recreational uses, fishing).
- **Community:** The community is expected to be improved because trash capture and reduction enhances the community.

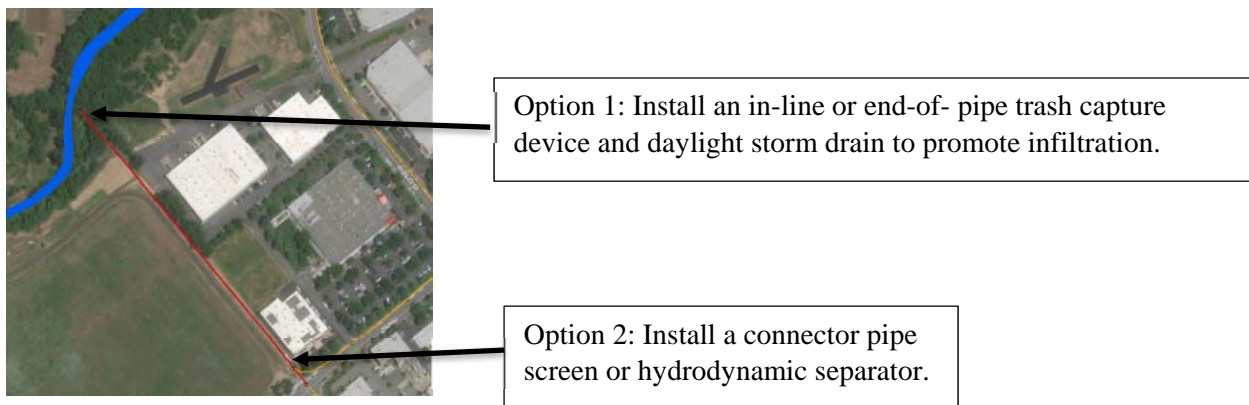
Project Costs

- **Estimated Plan Preparation Cost:** The estimated cost of preparing this plan is \$TBD. This cost does not include the costs of designing and constructing the improvements that will be identified in the plan.

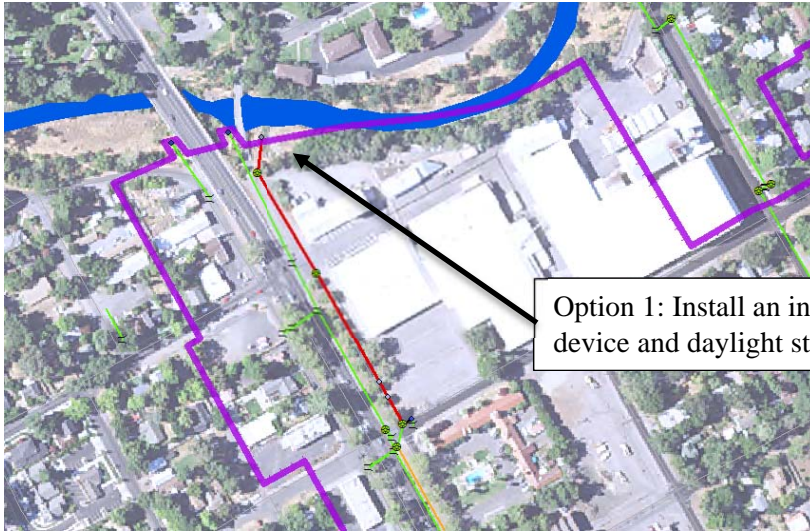
Sketch of Potential Project Components:



Potential configuration of trash capture device at Meyers Street Industrial Park

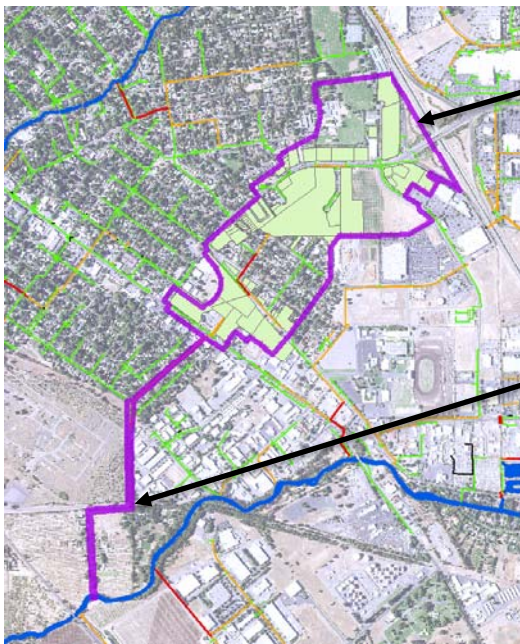


Potential configuration of trash capture device at Otterson Drive Industrial Park



Option 1: Install an in-line or end-of- pipe trash capture device and daylight storm drain to promote infiltration.

Potential configuration of trash capture device behind Chico Nut Company



Purple outline shows the upper watershed for Crouch Ditch. Green shading shows the high priority land uses in the watershed.

Install an in-line trash capture device along Crouch Ditch.

Potential configuration of trash capture device in Crouch Ditch

Initial Projects Included

This project includes the following Initial Projects in whole or in part:

- SWRP 2 - Teichert Ponds Improvement Project
- SWRP 7 - Comanche Creek water quality
- SWRP 9 - Lindo Channel Non-Point Pollution
- SWRP 11 - Little Chico Creek Water Quality
- SWRP 12 - Mitigating New Impacts to Sycamore Bypass
- SWRP 14 - Teichert Ponds Vegetation, Trash and Public Access
- SWRP 22 - Outreach and Maintenance of Parks
- SWRP 23 - Trash Capture Devices
- SWRP 80 - Revised City of Chico Long-term Trash Reduction Project
- SWRP 83 - Teichert Pond Water Quality Improvement Project
- SWRP C - Teichert Pond